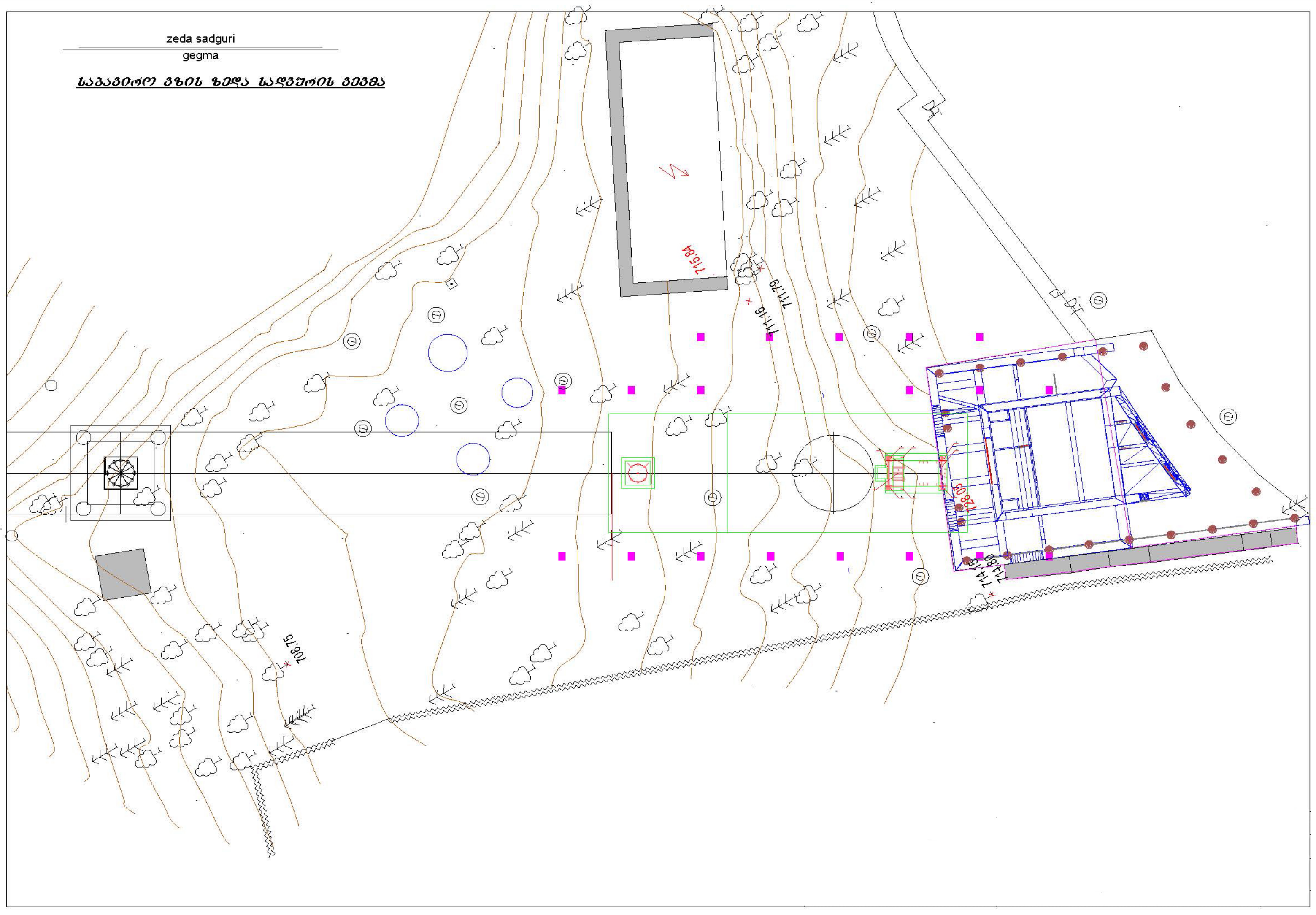


zeda sadguri  
gegma

საპროექტო გზის ზედა საფარის გეგმა



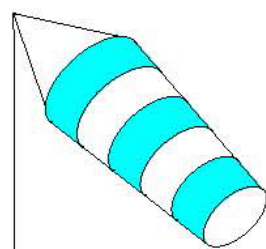
5

12T 501C

12T 501C

17.12 m

0°



l: 29.59 m

h: 0.10 m

l\*: 29.59 m

n: 0.34 %

zeda sadguri

Wili

TEB

3R 403

3R 403

Top station

Station level 722.31 m

